



DESIGN CONCEPT & PROCESS

Class Design Objectives

- To create a community-appropriate structure with echoes to vernacular architecture
- To provide shelters that compliment and connect nearby park amenities To create a reusable, classic structure which can be easily relocated or removed
- To take advantage the unique opportunity to place a major community gathering space in the outdoor setting of the local park

Design Steps

- Key precedents were found in Tualatin's Trestle bridge, the rustic structure already present on the Tualatin Riverfront, and

Future Steps

- Based on review, the design should be revised to create a stronger experience of a "transformative" portal
- The kit of parts portal should differ in language from the proposed buildings
- Larger building setback from the curb and increased path size around the boathouse, as well as garage doors or better ventilation on the boathouse, would be improvements



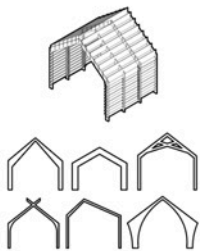
Design Process Precedents

Based on the midterm's encouragement of a classic form which exposed the wood connections at play, we leaned towards a simple structure that would accomplish architectural and enclosure needs at once.

Curved profiles of the portals, as well as an enhanced overhang created by sacrificial 2 by 6 wood pieces, were proposed. Ultimately, material restrictions saw a clean and small portal emerge out of an idea of lateral bracing as a "shingle."



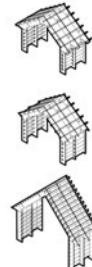
Stage 1: Early Inspiration



Stage 2: Gable Form



Stage 3: Experimentation



Stage 4: Refinement



Stage 5: Final Result

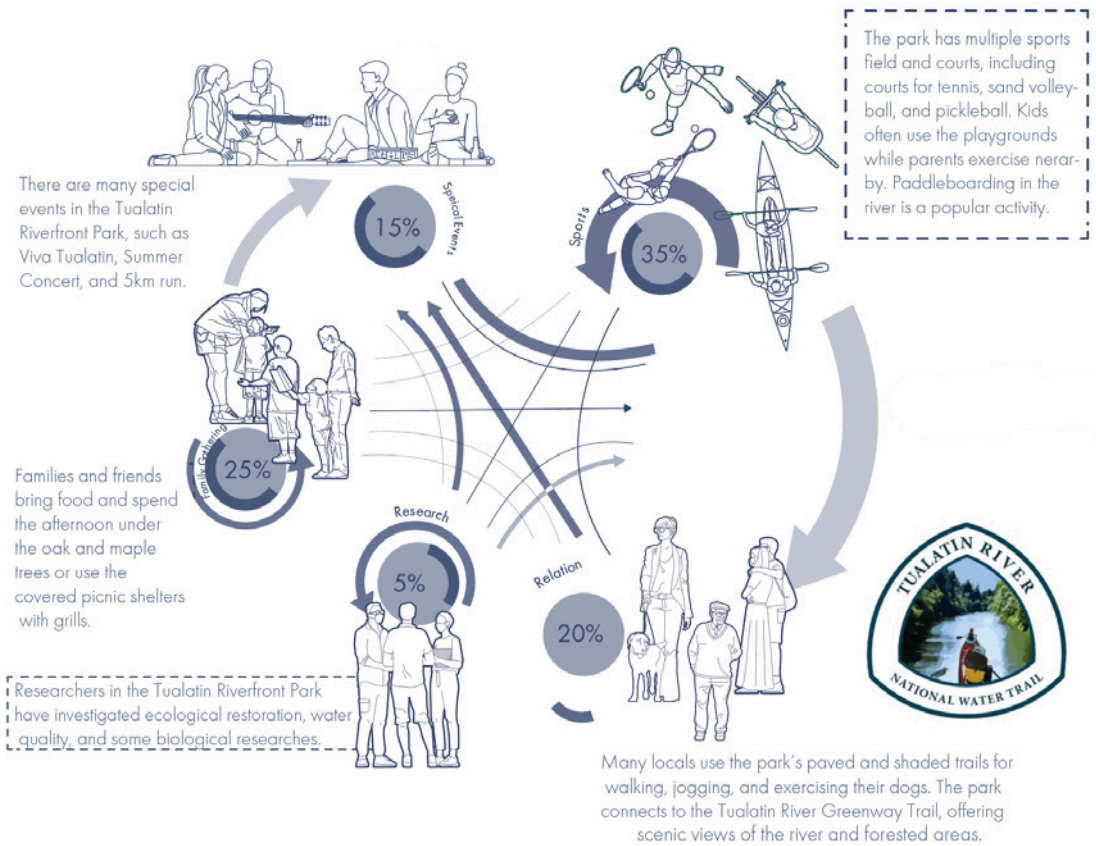
Design Process Diagram



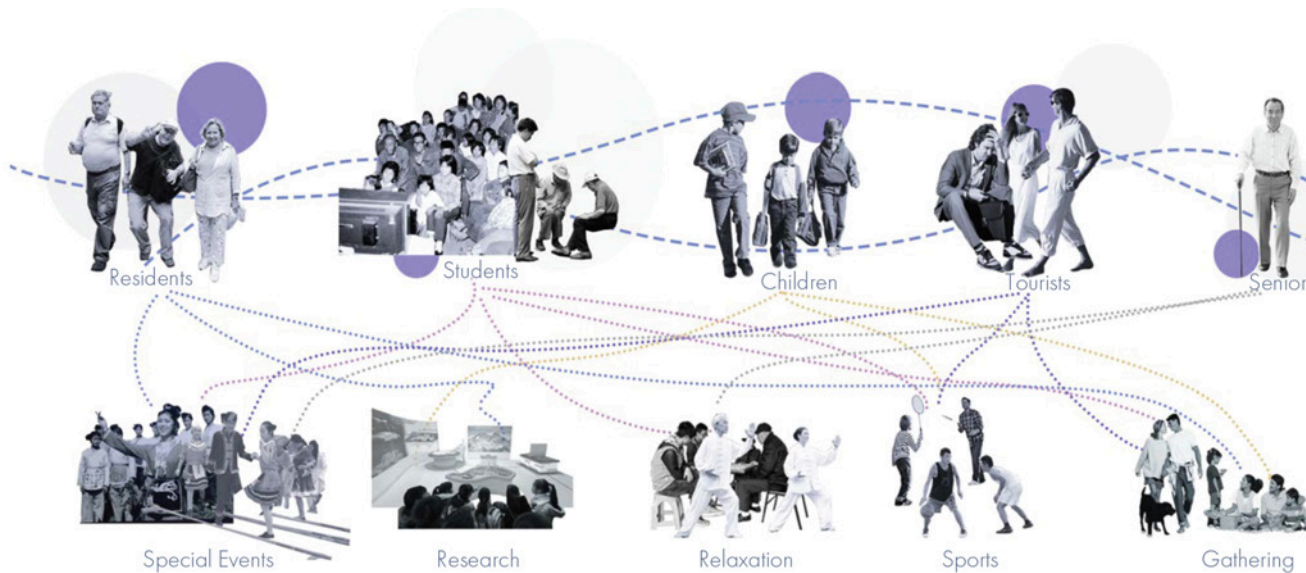
Adjacencies



Roads and Views



Daily Events



Activity Map

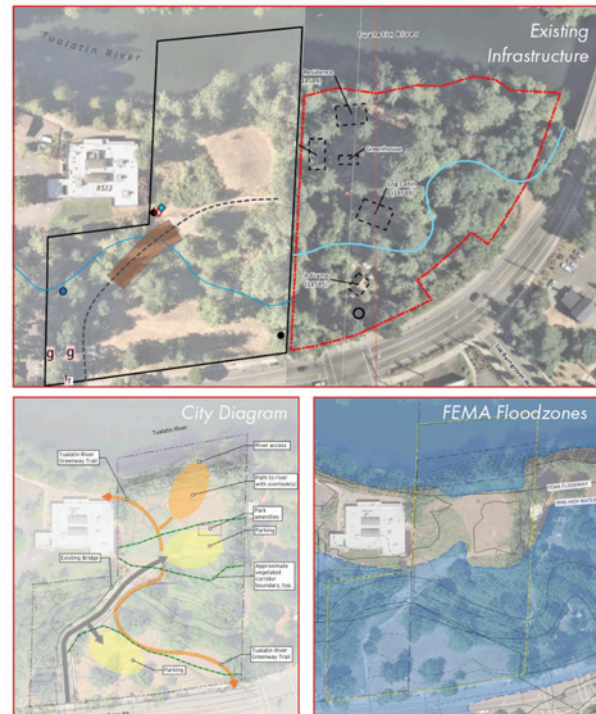


Tualatin Riverfront Park Proposed Site Plan

The chosen Riverfront park site is located in downtown Tualatin, critically adjacent to the Tualatin Lake at the Commons as well as future housing developments in the area and a potential new farmer's market located in the current parking lot south of the park.

The site has key restrictions in its placement near a riparian zone in need of restoration. A potential pathway under the bridge as well as the extension and new openings of currently dammed creeks introduces new ways for visitors to interact with water.

The community specifically wanted all proposed plans to include ADA accessible parking spots and safety from flood zones. A new boat launch for non-motorized boats needed to accommodate the safe transport and storage of kayaks.



Site Features

